



Aerial Compliance – Transparency & Efficient Assessment Process

RSPO RT 17 Conference

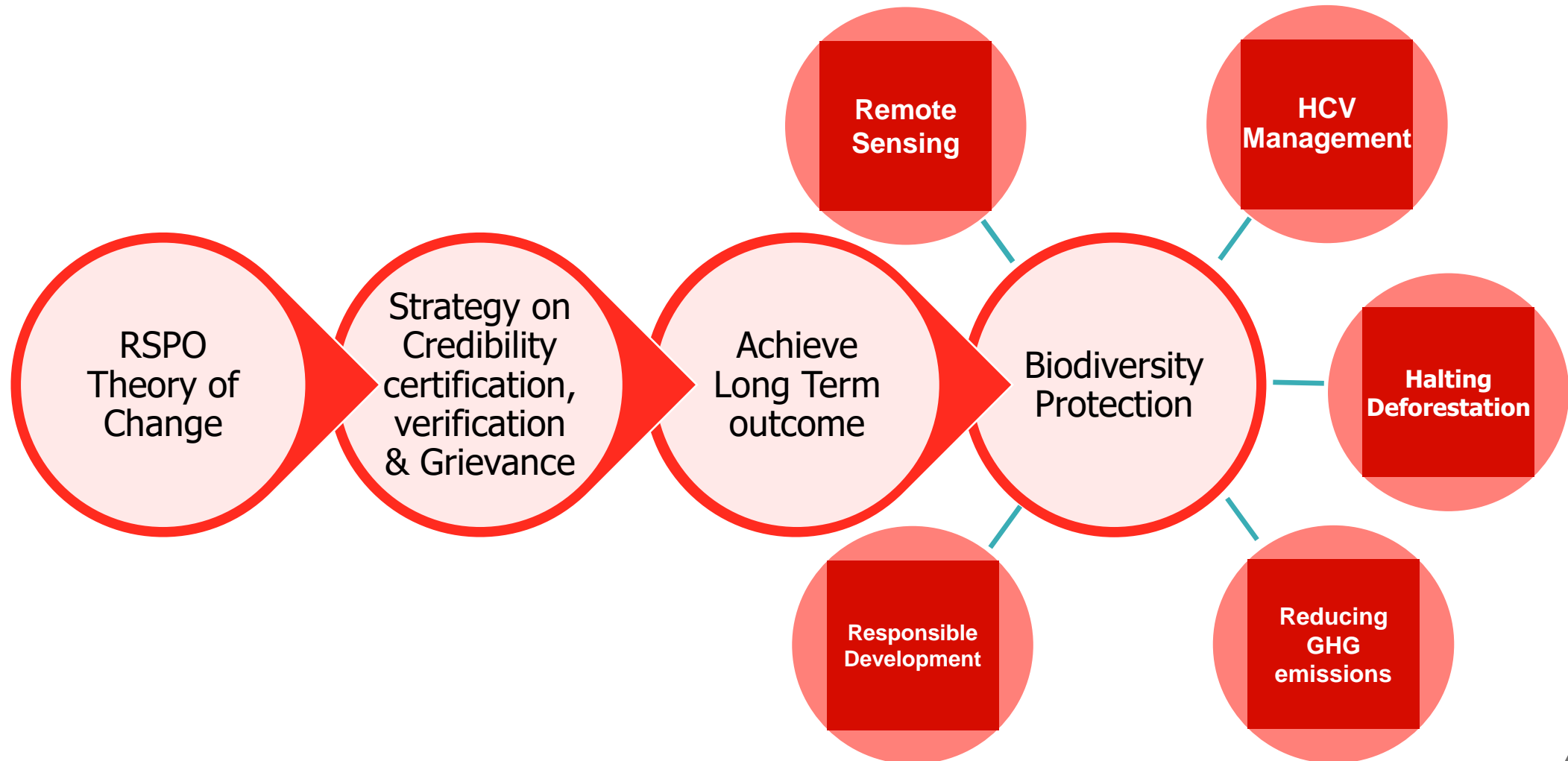
4th November 2019



By Royal Charter



RSPO Theory of Change



Aerial Compliance for Transparency



Aerial Imageries:

Increase transparency and holistic landscape assessment coverage (more than eye level compliance).

Unique aerial perspective to allow coverage of remote areas that may not be accessible from boots on the ground.

Agriculture management practices can be monitored to ensure there is no deforestation or encroachment and potentially GAP.

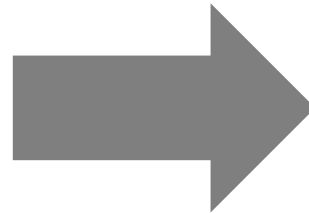
Aerial Compliance for Efficient RSPO P&C Assessment

Aerial Imageries:

Increase transparency and holistic landscape assessment coverage (more than eye level compliance).

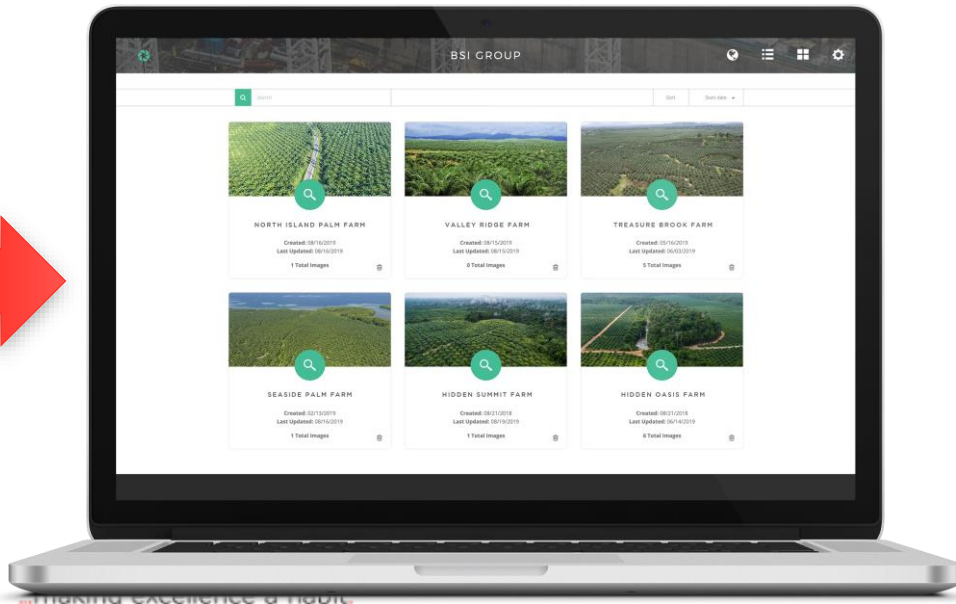
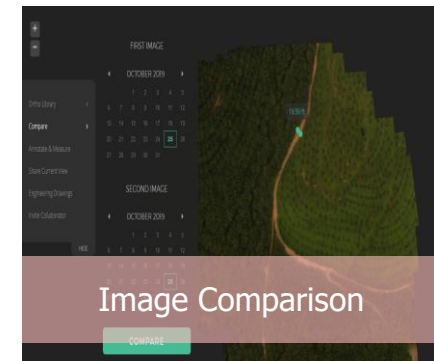
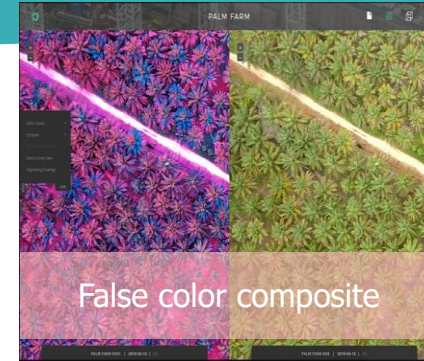
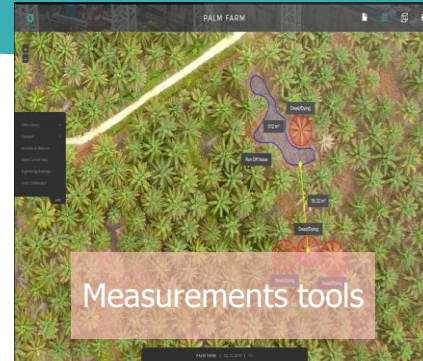
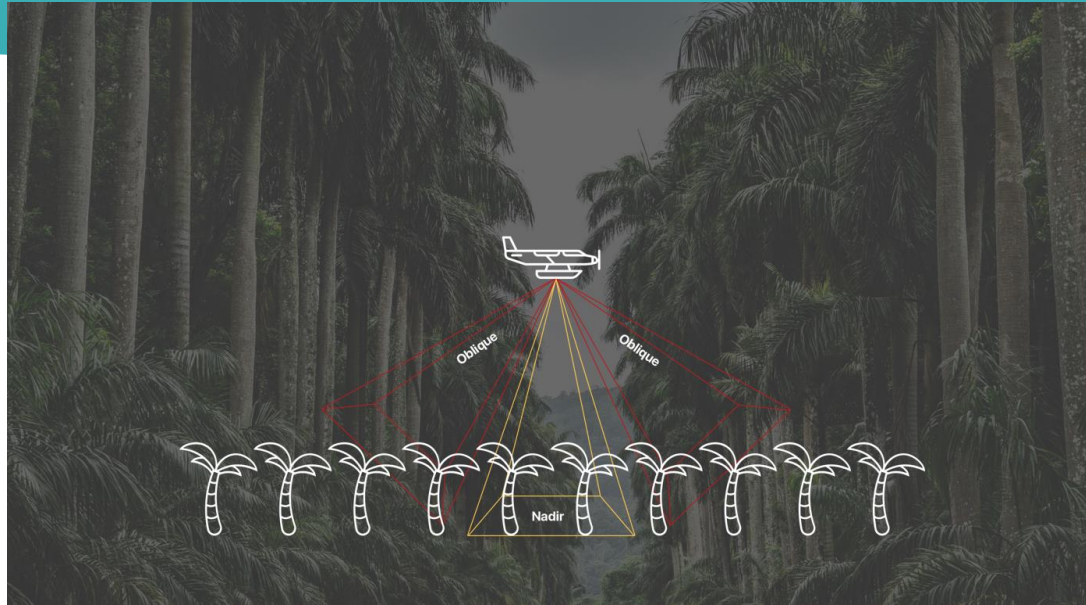
Unique aerial perspective to allow coverage of remote areas that may not be accessible from boots on the ground.

Agriculture management practices can be monitored to ensure there is no deforestation or encroachment and potentially GAP.



Principle	Indicator	Area of assessment	From Aerial observation
P2	2.1.3	Boundaries	Authorised boundaries
P7	7.1.3	Pest control - Good agriculture Practice	Owl nest and no fire marks
	7.2.9	Aerial Spraying	Palm damages
	7.3.3	Waste disposal	No fire marks
	7.5.2	Slope/ steep area	No replanting
	7.5.3	Slope/ steep area	No new planting
	7.7.1	Peat area	No new planting on Peat
	7.7.7	Peat area	Unplanted area as peat conservation area
	7.8.2	Riparian and buffer area	Buffer zone conservation and restoration
	7.11.1	Land preparation	Burn marks
	7.12.1	HCV or HCS	No unauthorized land clearing
	7.12.8	HCV or HCS	Land clearing without HCV assessment

BSI's vCapture Platform



Visit Booth #7 for more details

BSI's vCapture Platform to RSPO Theory of Change

Credibility

- BSI authenticates and verifies all data uploaded to vCapture. An instrument of Trust via the scientific HCV monitoring
- Provides both assessors and the plantation owners a cloud-based platform to document nonconformities visible in 2D orthomosaic and 3D modeling (on going development).

Transparency

- Assessor able to access to more transparent information on estate performance.
- Provides a platform for growers, suppliers, and retailers including banker to use, which allows for transparency and traceability monitoring in the entire supply chain.
- Sharing of platform decided by company.

RSPO Theory of Change



Credibility certification, verification & Grievance



Achieve Long Term outcome



Biodiversity Protection

BSI's vCapture Platform to RSPO Theory of Change

Remote Sensing

- vCapture images are geo tagged and time stamped.
- vCapture allow map laying.

HCV Management

- vCapture has unique and precise tools that can be used to measure erosion of vulnerable soils and slopes. Buffer zones can be precisely measured and monitored to meet the compliance in conserving and rehabilitant, and any land use/concession changes can be monitored consistently.

Halting Deforestation

- vCapture's time lapse and measurement tools that can accurately measure any land use changes to ensure zero deforestation and encroachment.

Reducing GHG emissions

- vCapture provides false color composite to visualize crops nutrient deficient. Consistent monitoring fertilization plan, which could reduce GHG emissions and meeting GAP.

Responsible Development

- vCapture's time lapse can capture no illegal new planting.

RSPO Theory of Change



Credibility certification, verification & Grievance



Achieve Long Term outcome



Biodiversity Protection

BSI's vCapture Platform – other benefit

- Aerial monitoring on plantation operations potentially to identify nutrient deficiency, palm pest and diseases.
- Aerial monitoring on replanting activities especially in road layouts, drain constructions for land preparation and cover crop establishment.
- Aerial accessibility to inaccessible area such as flooding and remote located areas.
- Increases coverage area on operation monitoring by replacing traditional method.

BSI by Royal Chartered – a trusted global brand

Founded in 1901

193 countries,
73 offices

86,000 clients

4,500 colleagues
and 11,900 experts

150,000 delegates
trained

59,000 standards
published



The world's most
adopted risk
management standards
all originated with BSI

...and are all delivered
by BSI **and** our
competitors

Quality management BS 5750 (1979)

- ISO 9001 (1987);
- ISO 13485;
- IATF 16949;
- AS 9100

Environmental risk management BS 7750 (1992)

- ISO 14001 (1996)

Health and safety risk management BS8800 (1996)

- BS OHSAS 18001 (1999)
- ISO 45001 (2018)

Information security risk management BS7799 (1995)


- ISO 27001 (2005)

Business continuity risk management BS 25999 (2007)

- ISO 22301 (2012)

Conclusion

- This unique aerial imaging not only provides a landscape of the entire plantation to monitor deforestation and land disputes, but also helps growers monitor their operations and maintenance of their fields.
- Promote efficient and holistic RSPO compliance assessment that increases credibility and transparency.
- Coupled with BSI's expertise, vCapture provides more than visual compliance; an innovative solution allows for a centralized, organized experience for growers, bankers, suppliers, and retailers.



Thank you
BSI is at booth #7.
Visit us for surprises.

Nicholas.Cheong@bsigroup.com

...making excellence a habit